

UP
TO **15%**
OFF
SELECTED PRODUCTS

*T's & C's Apply. Valid while stocks last and for a limited time only.

2023
Special Offer Catalogue





ENTRANCE MATS

Reducing walked in dirt and moisture to prevent slips

From heavy-duty rubber entrance mats to lightweight dust mats, COBA has it covered! This section is packed with contemporary and traditional designs to suit most budgets, with options in a wide variety of sizes, colours, and wear grades for indoor and outdoor dirt/moisture control.

[VIEW NOW](#)



COBAWASH®

A real asset in floor protection for domestic and commercial use

- Easy to clean, practical and machine washable. • Easy care, smaller sizes can be washed in a domestic washing machine. (All sizes can be washed in an industrial washing machine.) • Carpet pile can retain up to 3.5 litres/ m² of moisture. • Also traps up to 800g of debris/dry dust. • Bleach and fade resistant – 11-year warranty against significant colour loss. • Product height: 8 mm



Material

PA

Resistance to Environment

Suitable for indoor environments only



SIZE	BLACK/RED	BLACK/BROWN
0.85 m x 1.5 m	LM010302	
0.85 m x 3 m		-
1.15 m x 1.75 m	LM010303	LM010503

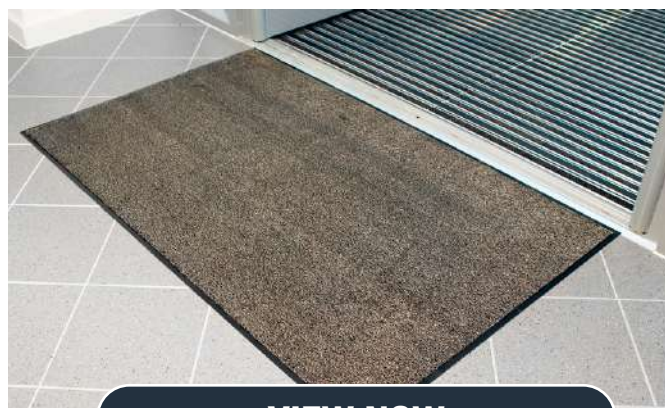
VIEW NOW



MICROFIBRE DOORMAT

Washable doormat with super absorbency and microfibre technology

- Multi-action entrance mat with hygienic microfibre technology.
- Flexible, ultra-fine fibres (finer than a human hair) provide deep-cleaning action on passing footwear.
- Friction from the fibres generates a static charge that attracts and traps dust/debris.
- Effectively penetrates those hard to reach treads on footwear and wheeled trollies.
- Superior 'brushing and wiping' with 'rapid dry' properties that outperform cotton.
- Luxuriously soft pile that keeps entrances looking smart, stylish and free from lint.
- Environmentally-friendly – does not require chemical pre-treatment or washing detergents.
- Product height: 8 mm



VIEW NOW



SIZE

0.6 m x 0.4 m

0.75 m x 0.45 m

BLACK

MF050004

MF050005



Material

Microfibre

Resistance to Environment

Suitable for wet and dry indoor environments



Visit www.cobaafrika.com for information, advice and support.

FIRST-STEP

The first step to contamination control

- A hygienic pad of peel-off, disposable sheets, manufactured from an anti-microbial agent to protect against bacteria, mould and mildew.
- The 'tacky' sheets capture dirt and dust from footwear and wheeled equipment for contamination control.
- When the top sheet becomes soiled, simply peel off to reveal a clean layer.
- Comes with self-adhesive backing to keep the mat in place.
- Ideal for hospitals, clean rooms, general industrial environments, and any other area where hygiene is an important factor.
- Product height: 1.5 mm

Each order contains 4 packs, and each pack contains 30 peelable sheets.

SIZE	WHITE	BLUE
0.45 m x 1.17 m	WC000004	WC020004

Typical Applications

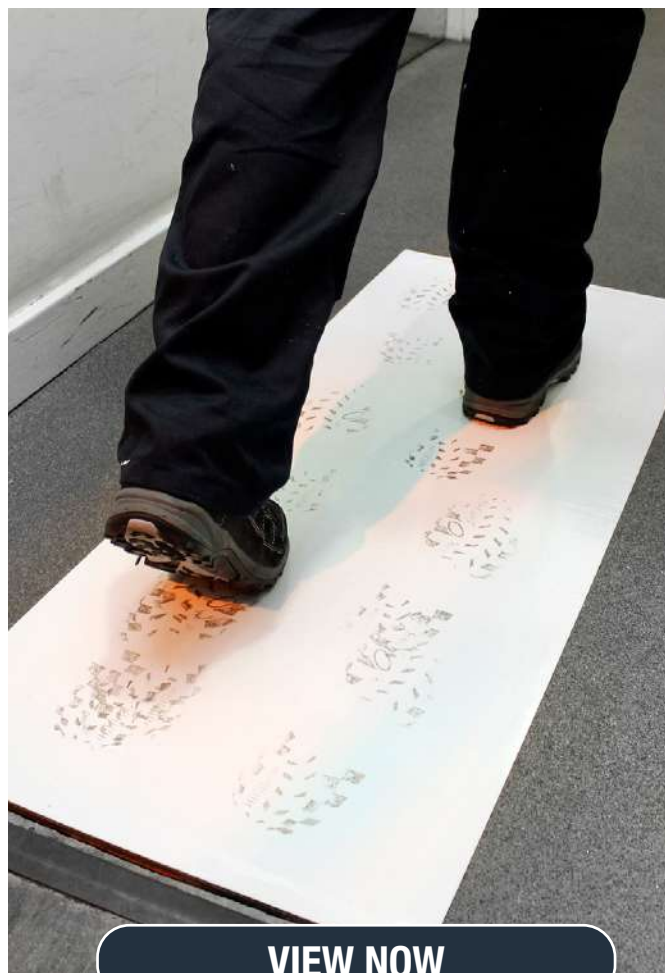
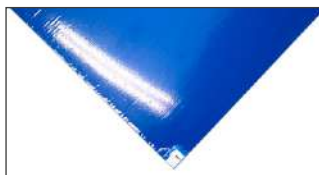
Entrance areas, Clean rooms, Hospitals

Material

PE with water based acrylic adhesive.

Resistance to Environment

Suitable for indoor environments only



VIEW NOW

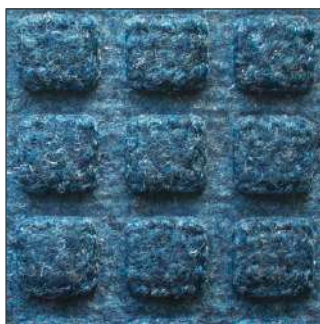
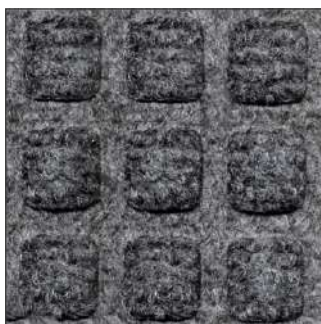


ENVIRO-MAT

Doormat made from 100% recycled materials

- Sturdy doormat manufactured from 100% recycled materials.
- Surface is made from recycled plastic bottles, while the anti-slip backing is made from recycled tyres.
- Classic raised pattern surface creates a stylish finish.
- Effectively scrapes and traps dirt/debris.
- Anti-slip backing helps grip to the floor surface.
- Total carpet coverage eliminates torn borders.
- UV and fade-resistant surface.

SIZE	BLUE	GREY
0.9 m x 1.5 m	EM020002	EM060001
0.6 m x 0.9 m	EM020001	



VIEW NOW

VYNA-PLUSH

The perfect low-cost doormat to scrape dirt and wipe moisture

- Budget doormat offering all-round performance to prevent slips and trips.
- 100% polypropylene fibres provide effective 'scraping' surface.
- Slip and stain-resistant.
- PVC backing to keep your mat securely in place.
- Available in rolls for larger entrance areas.
- Range of bright colours available, to match interior theming.

SIZE	BLACK/BROWN
0.75 m x 0.4 m	VP010506



VIEW NOW



Visit www.cobaafrika.com for information, advice and support.



[VIEW NOW](#)

SUPER CONTRACT FALL

Distinctive looped design matting

- The resilient open loop design scrapes dirt from shoes allowing it to fall through the mat for easy cleaning.
- Soft, compounded PVC looped surface traps dirt, debris and moisture.
- Suitable for recessed matwells, featuring a non-slip mesh backing to prevent shrinkage.
- Can be custom-printed with personalised logos or messages.
- Choose from 20 colours (colours may vary).
- Please note sizes larger than 1.2m in width will have a visible join
- Product height: 15 mm



BACKING

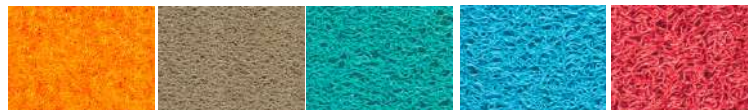


Resistance to Environment

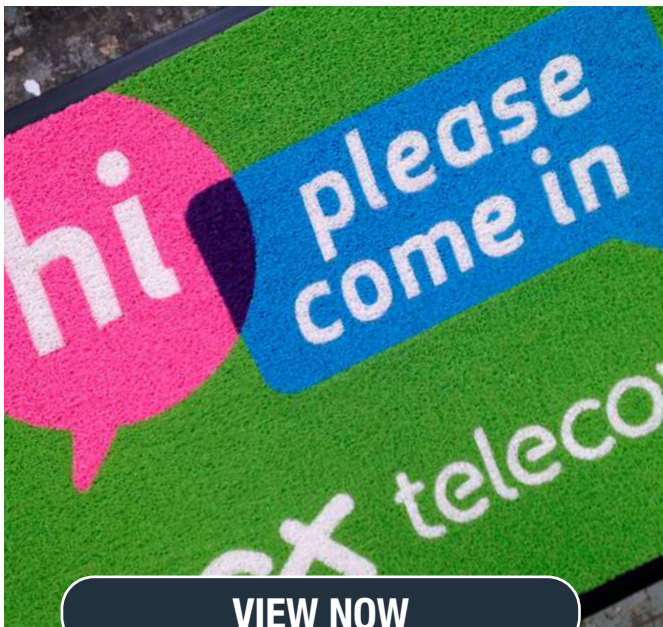
Suitable for indoor environments only

Material

Vinyl loops



SIZE	ORANGE	BEIGE	TURQUOISE	BABY BLUE	PINK
1.2m x 12m	LU171212	LU211212	LU411212	LU241212	LU261212
1.2 m x per linear metre	LU171212C	LU211212C	LU411212C	LU241212C	LU261212C



[VIEW NOW](#)

CUSHION FALL

Distinctive looped design matting

- The resilient vinyl loops scrape dirt off shoes.
- Soft, compounded PVC looped surface traps dirt, debris and moisture.
- The mat features a non-slip vinyl backing which keeps the dirt and moisture off the floor.
- Can be customised with personalised logos or messages.
- Choose from 20 colours (colours may vary).
- Strength designation: 4.6%.
- Product height: 8 mm



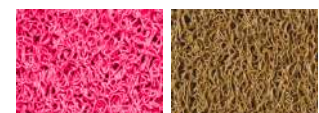
BACKING

Typical Applications

Interior or exterior covered entrances
loose-lay with bevelled edging.

Material

Vinyl loops



SIZE	PINK	GOLD
1.2m x 12m	LB261212	LB231212
1.2 m x per linear metre	LB261212C	LB231212C



WASH & CLEAN

Economical washable doormat

- Stylish, soft-to-the-touch nylon pile doormat.
- Machine washable at 40 degrees.
- Made from a hard wearing nylon surface.
- Absorbent to 1.5 litres per m².
- PVC non-slip back.

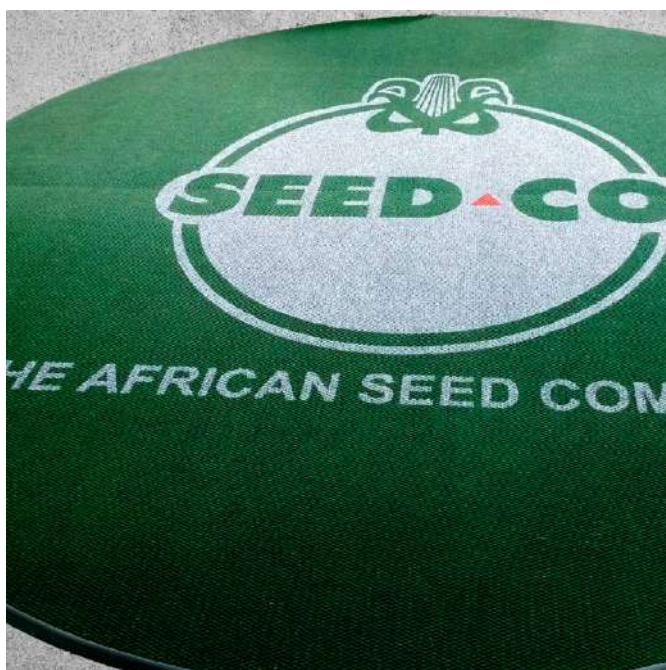


SIZE

1.2 m x 1.8 m

NAVY

RO1016N/BL

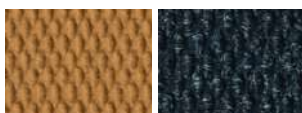


[VIEW NOW](#)

SPECTRA CLEAN

Make an instant impact

- The textured top surface provides outstanding scrubbing action, whilst absorbing moisture to save your floors from dirty footprints.
- Enhance this entrance mat by inserting a custom-made company logo.
- 25 colours to choose from (colours may vary).
- Product height: 11 mm



SIZE

2 m x 23 m

Per Square Metre

LIGHT BEIGE

SC210001

SC210001C

NAVY BLUE

SC180001

SC180001C



Resistance to Environment

Suitable for indoor environments only

Material

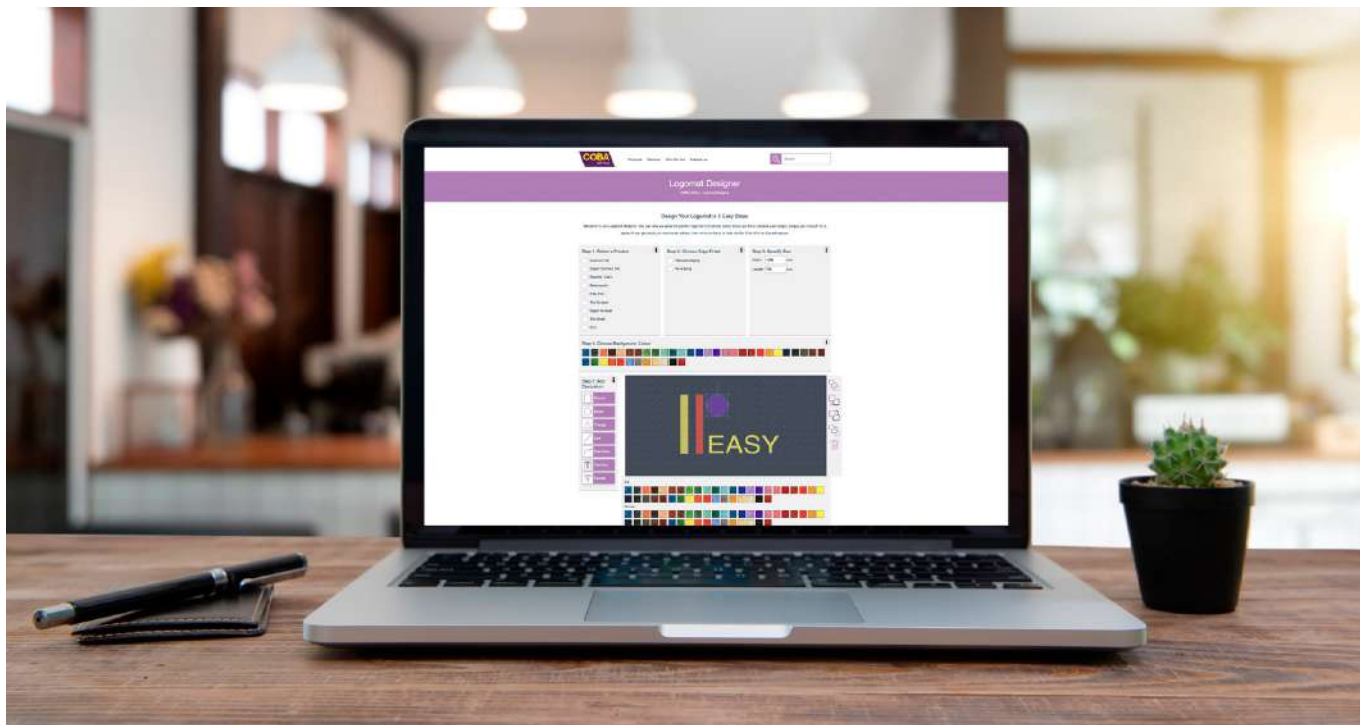
100% Polypropylene



Visit www.cobafrica.com for information, advice and support.

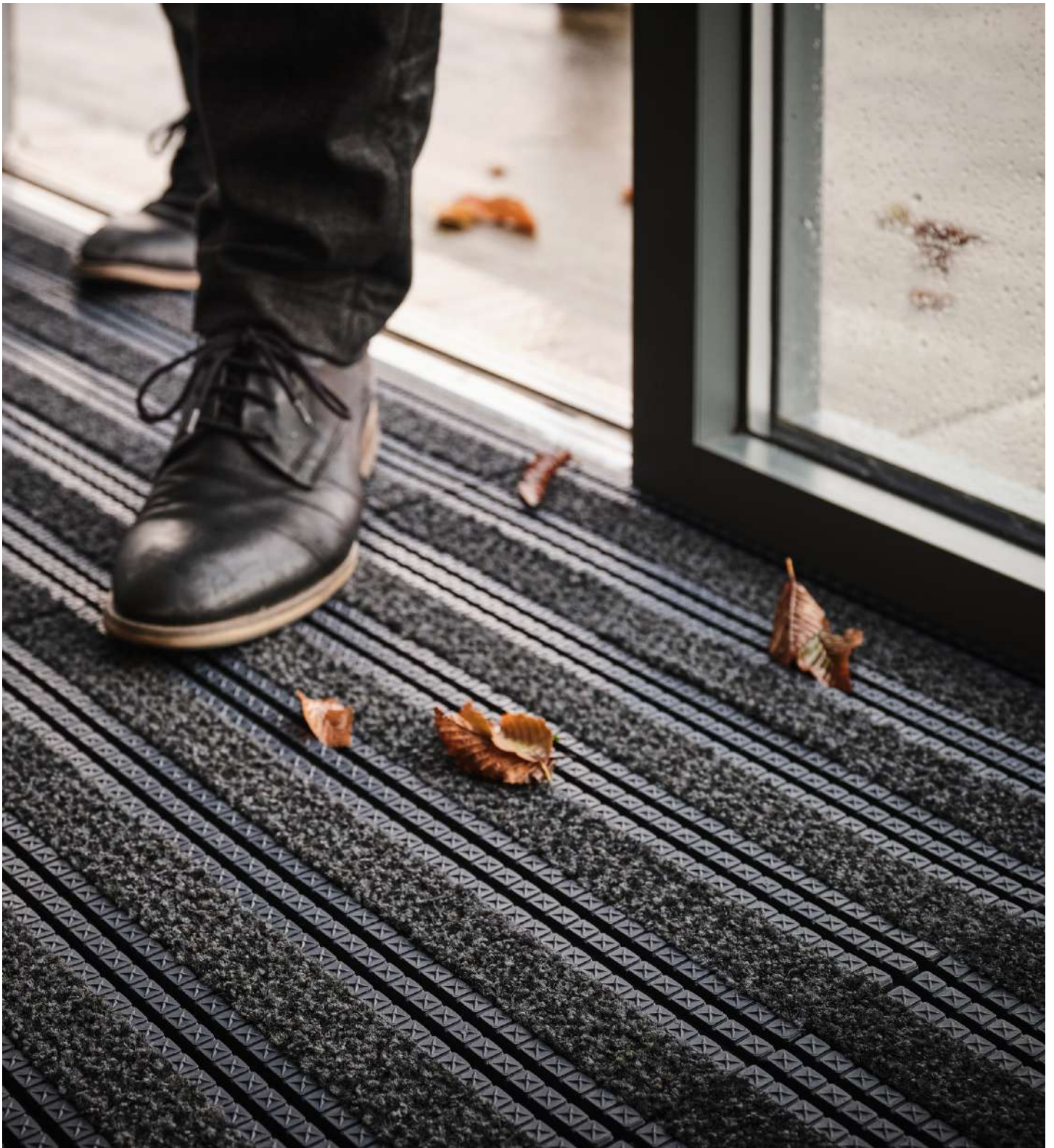
EVERY BUILDING HAS AN ENTRANCE. YOU CAN MAKE YOURS STAND OUT FROM THE CROWD BY DISPLAYING YOUR COMPANY LOGO AT THE DOOR WITH PERSONALISED WELCOME MATS. THIS ENSURES EVERY VISITOR LEAVES WITH A LASTING, VERY POSITIVE, VERY MEMORABLE IMPRESSION ABOUT YOUR BUSINESS.

TRY OUR EASY-TO-USE LOGOMAT DESIGNER TOOL TO MOCK-UP A VISUAL, WHILST USING THE REAL COLOUR OPTIONS AVAILABLE.



LOGOMATS AVAILABLE IN A VARIETY OF MATS AND STYLES





ENTRANCE MATTING SYSTEMS

Tackling dirt and protecting interior surfaces

NEW PRODUCT IN THIS CATEGORY

PREMIER FASTTRACK

Page 87

COBA offers an extensive range of Aluminium, Carpet and Tiled based entrance matting systems that are both stylish and deliver superior wear resistance for busy areas subjected to high volumes of pedestrian footfall. Many of our options have environmentally friendly materials in their manufacture. Whether it is interlinking entrance tiles, carpet on rolls or a custom-made aluminium system, our trained sales team can advise at every stage of specification and installation.

TREADWELL

100% recycled, hardwearing entrance floor tiles

- Ideal for entrances with medium to high footfall. • Fit for use with trolleys. • Entrance floor tile manufactured from 100% recycled material. • Looks stylish when laid in uniform or parquet.
- Easy to install. • Can be used for zone 1 to 3 in an entrance matting system. • Product height: 10 mm



Material

Recycled rubber tyre and belt material



SIZE		BLUE	BROWN
305 mm x 305 mm	(Pack of 10)	TW050001BLU	TW050001BR



SCAN ME



VIEW NOW

Q-BEEZ

Easy fit floor tiles – unpack and lay in minutes, not hours

- Innovative product, entrance mat in a box. • Easier to transport than matting on a roll and potentially less wastage compared with cutting from a roll. • Simple entrance matting solution with practical and creative design impact. • Easy fit, just lay into place on the subfloor using a tackifier or adhesive. You only need to cut the last row of tiles, hand tools can be used to cut and shape if needed. • Solid surface design prevents dirt from falling through the mat, making maintenance easy with regular vacuuming. • The rib features on each tile align perfectly, creating minimal installation waste. • Numerous laying patterns offer added flexibility for creating desired finish. • Individual tiles can be replaced if they become damaged, eliminating the need to replace the entire entrance matting area. • No Shrinkage
- Only for recessed applications. • Installation method: Glue recommendation for installation – TECHEM Adhesive TEC PSA 006. Apply glue with notched trowel. Allow curing time.
- Product height: 13 mm



Material

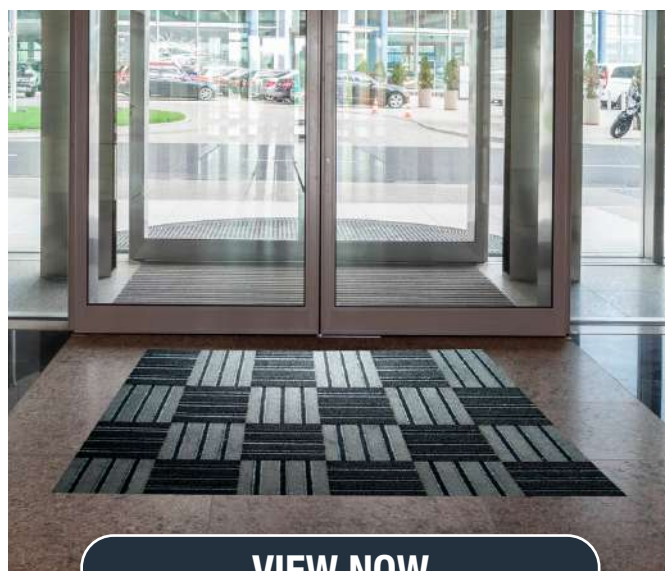
PP and PA

Resistance to Environment

Suitable for dry indoor environments

SIZE

45 cm x 45 cm x 1.3 cm
21cm x 21 cm x 1.3 cm



VIEW NOW

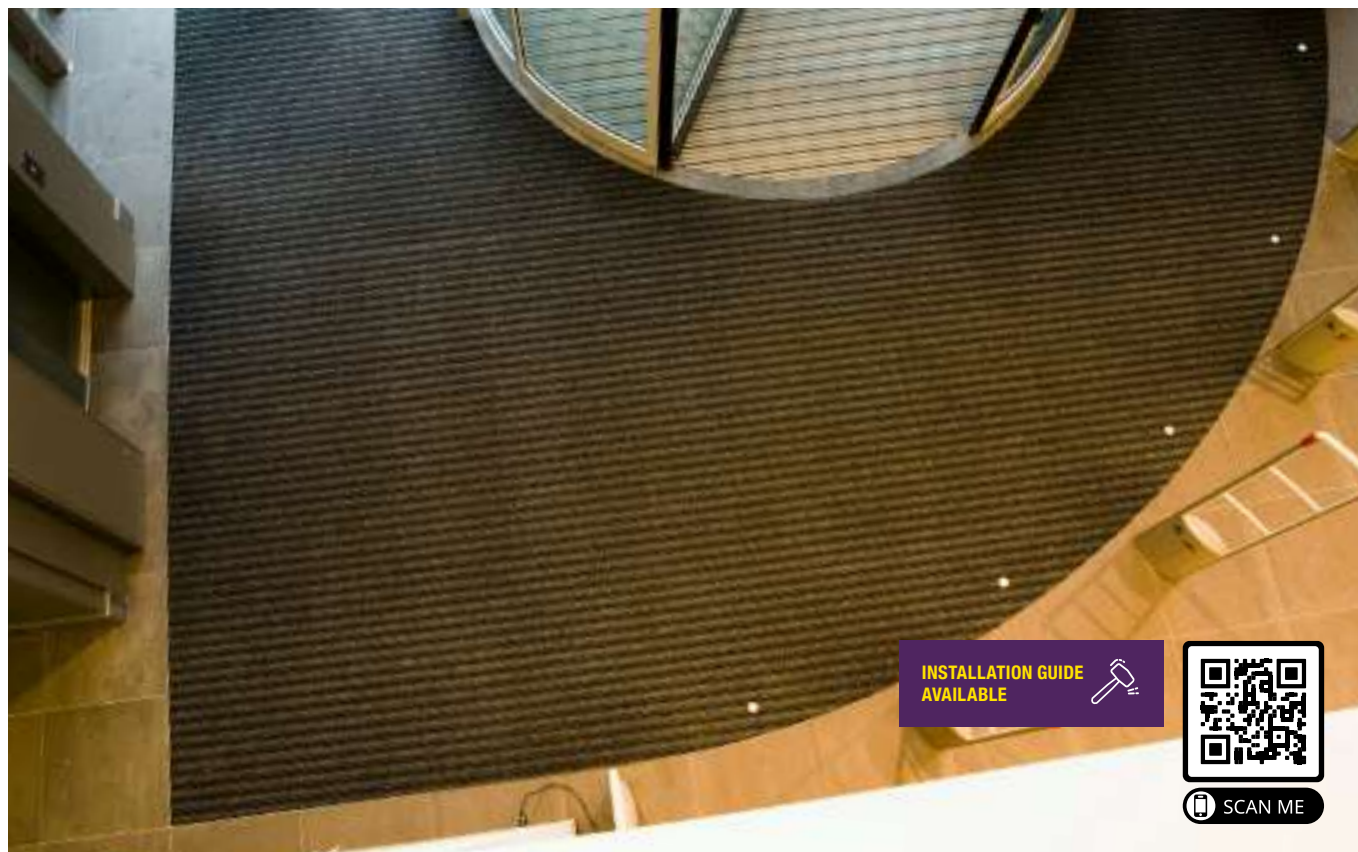


ANTHRACITE

Q-BEEZC-FL-S3
Q-BEEZC-FL-S1

GREY

Q-BEEZC-FL-S4
Q-BEEZC-FL-S2



TRIO BRUSH®

Attractive and hard wearing entrance matting

- Textured polypropylene fibres combined with alternating woven brush and polyamide strips provide outstanding scraping and drying action.
- Popular for both interior walkways and reception areas providing a total dirt-barrier solution.
- Also frequently used in recessed matwells in entrance areas.
- Suitable for recessed matwells or lay to surface with bevelled edging applications.
- Available with optional edging.
- Colours are specified with each order
- Suitable for glue down or lay to surface applications.
- Product Height: 6-9mm
- Suitable for high volume footfall in commercial locations.
- Tiles simply clip together on site for ease of transportation and installation.
- Move, clean or replace individual tiles – they clip together with ease.
- Product height: 10mm

SIZE	BROWN
Per Square meter	PMTB050001C
2 m x 20 m	PMTB050001



BROWN



Material

100% polypropylene needle ribs alternated with woven brush and drying stripes in polyamide

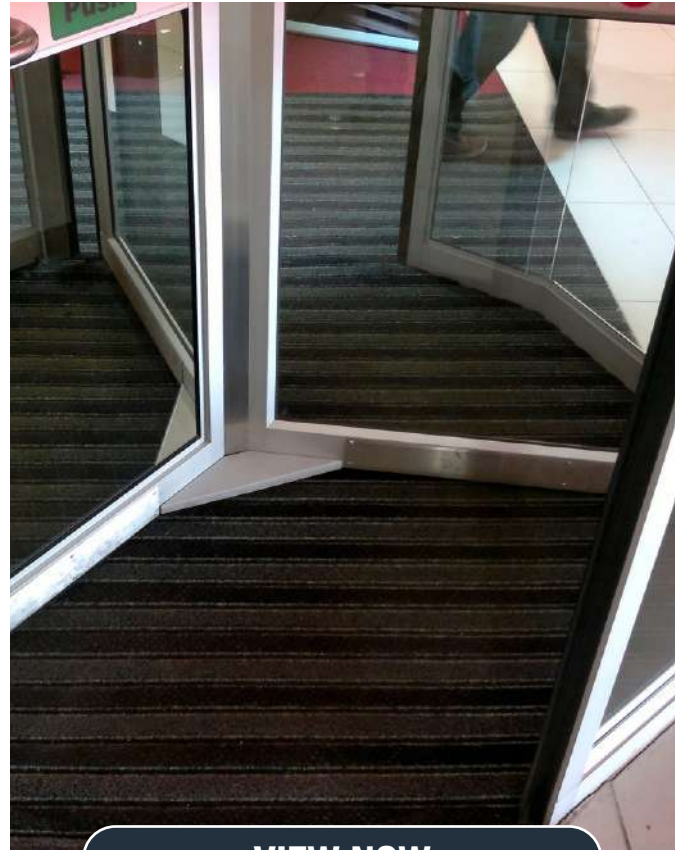
Typical Applications

Interior or exterior fully covered facility entrances in a mat well or loose-lay with PVC edging

VIEW NOW



To order FREE samples or arrange a site visit please call +27 (0)11 452 7961 or email sales@cobafrica.com



VIEW NOW

TRIO SCRAPER®

Superior high traffic entrance matting

- Superior high traffic entrance matting
- Install in recessed mat wells or loose-lay with bevelled edging.
- Anti-slip latex backing.
- Suitable for recessed matwells or lay to surface with bevelled edging applications.
- Available with optional edging.
- Colours are specified with each order
- Suitable for glue down or lay to surface applications.
- Product Height: 6-9mm
- Suitable for high volume footfall in commercial locations.
- Tiles simply clip together on site for ease of transportation and installation.
- Move, clean or replace individual tiles – they clip together with ease.
- Product height: 13mm



**INSTALLATION GUIDE
AVAILABLE**



SCAN ME



Material

100% polypropylene needle ribs
alternated with woven brush and
drying stripes in polyamide



BROWN

SIZE	BROWN
Per Square Meter	PMD050001C
2 m x 20 m	PMD050001C



SCAN ME

**INSTALLATION GUIDE
AVAILABLE**


SUPER SCRAPER®

Quality barrier mat for exterior use

- Super Scraper is made with 100% polypropylene needle ribs alternated with polyamide brush strips, and perforated holes for drainage.
- The ideal choice for facility entrance loose lay with PVC Edging or in a matwell.
- Brushes debris from footwear, while also wiping moisture.
- Suitable for indoor and outdoor entrance areas with sheltered canopies.
- Available with optional edging.
- Colours are specified with each order
- Suitable for glue down or lay to surface applications.
- Product Height: 13mm
- Suitable for high volume footfall in commercial locations.
- Tiles simply clip together on site for ease of transportation and installation.
- Move, clean or replace individual tiles – they clip together with ease.
- Product height: 13mm

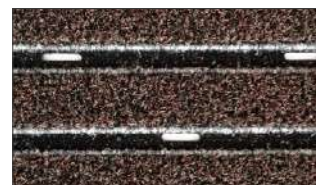


Resistance to Environment

Suitable for indoor environments only

Material

100% polypropylene needle ribs alternated with polyamide brush strips and drainage perforation.



BROWN

SIZE	BROWN
Per Square meter	PMS050001C
2 m x 20 m	PMS050001

VIEW NOW



To order FREE samples or arrange a site visit please call +27 (0)11 452 7961 or email sales@cobafrica.com

**Bespoke Handmade
Entrance Matting Systems,
for Award Worthy Entrances**





ESD MATS & ACCESSORIES

Protecting people and components from the effects of static electricity

Electrostatic Discharge (ESD) can be a problem in certain working environments and pose a major risk to electrical or explosive components. Floors, chairs, work surfaces and packaging can all create static electricity, which when released is known as Electrostatic Discharge. We have a comprehensive range of lab tested ESD floor mats and accessories to protect you and your electronic components against the harmful effects of static electricity.



VIEW NOW

COBAELITE® ESD

Bubble surfaced mat to tackle fatigue in ESD sensitive areas

- Static-dissipative anti-fatigue mat for comfort and safety.
- Conductive buried layer neutralises static charge, protecting components.
- Comfortable bubbled surface promotes subtle movement further reducing fatigue.
- Grounded via a 10 mm male stud fitted to the mat.
- Meets or exceeds IEC61340-5-1 resistance requirements.
- Resistance to a groundable point (Rgp): $2.4 \times 10^6 \Omega$
- Product height: 14 mm

SIZE

0.6 m x 0.9 m

BLACK

SE010001ESD

ESD KITS ALSO AVAILABLE

Part code	Description
	COBAelite® ESD Studded Mat
SE010001ESD	0.6m x 0.9m
	Kit includes:
	• Floormat Grounding Wire
	• Yellow Earth Bonding Plug – UK
	• 3 Pin Plug Adaptor - SA



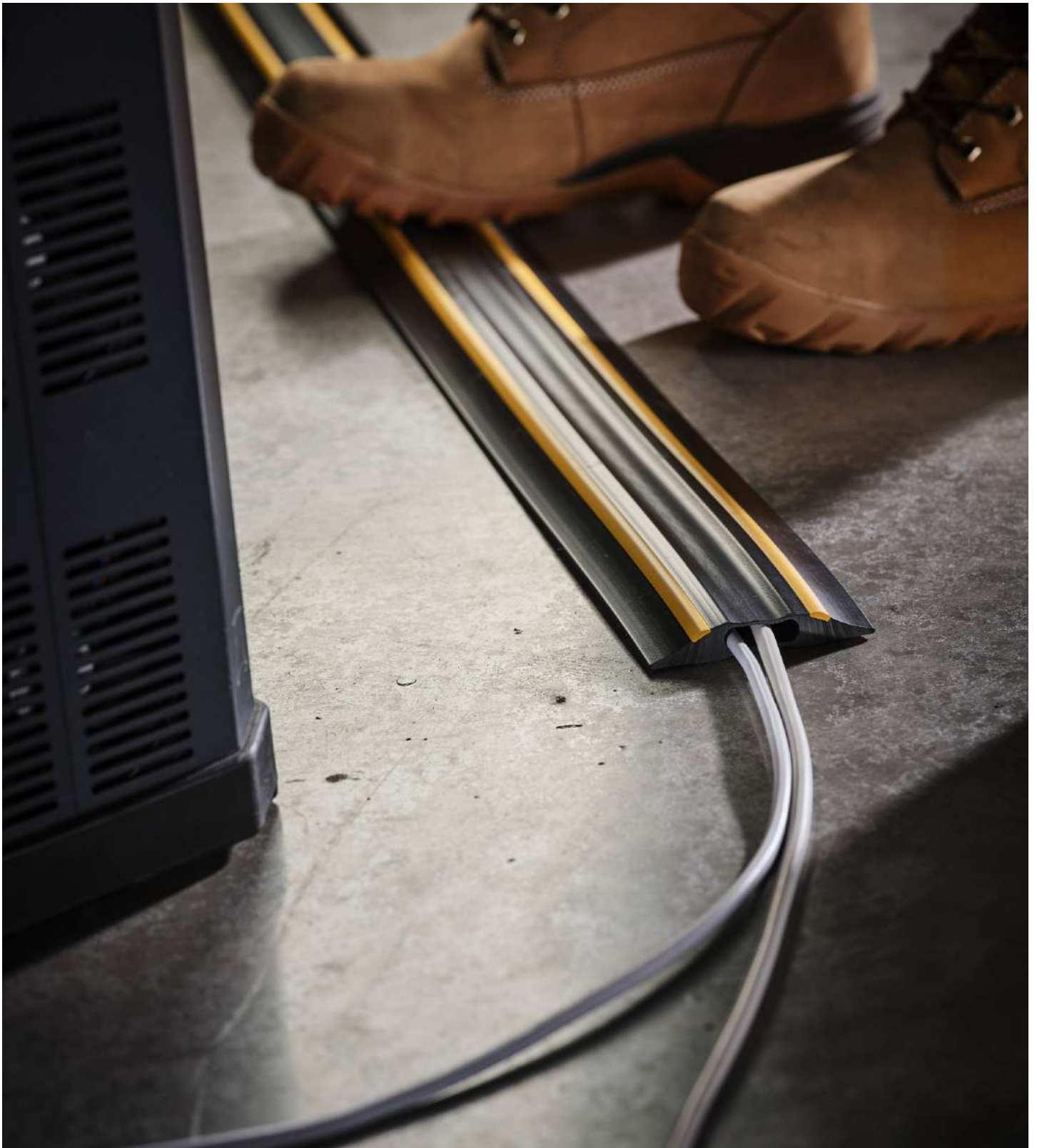
Material
PU

Resistance to Environment
Suitable for dry indoor environments

NON-ESD
version available as a
workplace safety mat

PAGE 34





FLOOR LEVEL SAFETY ACCESSORIES

Defining dangers and increase pedestrian safety

NEW PRODUCTS IN THIS CATEGORY

GRP NOSING –

NEW COLOURS AVAILABLE

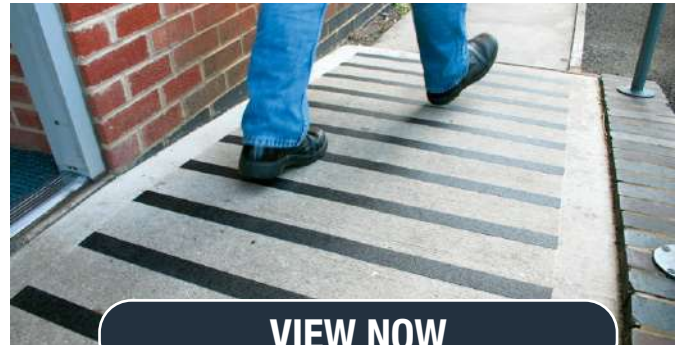
Page 63

The most commonly occurring cause of non-fatal accidents in the workplace continues to be slips and trips. Injuries resulting from such accidents cause pain and suffering for the individual but can also be complex for the site owner or employer. By reducing the risk of slips with non-slip floor surfaces or highlighting floor level hazards with tape and cable protectors, this will go a long way to reducing overall risk.

GRIPFOOT

**Improve grip on smooth surfaces
with an abrasive grit finish**

- Self-adhesive tapes, cleats or tiles with an abrasive grip surface which helps to improve anti-slip properties.
- A hardwearing and easy to install solution to help prevent slips and trips.
- Available in a range of colours, including a hazard version which provides high visibility in darkness and low light conditions.
- Gripfoot Tape – versatile for floor surfaces, machinery and vehicles.
- Gripfoot Cleats (rectangular) are designed for use on steps and stairs.
- Gripfoot Tiles (square) are ideal for increasing safety on smooth, tiled floors.
- Slip tested to DIN 51130.
- Product height: 1.05 mm



VIEW NOW



SIZE	BLUE	CLEAR	GREEN	RED	LUMINOUS
152 mm x 18.3 m		GF120004			
50 mm x 18.3 m	GF020002		GF040002	GF030002	GF110002
25 mm x 18.3 m		GF120001			

YELLOW	Aisleways & Traffic Lanes, 'Paths of Egress', Work Cells
WHITE	Production -OR- Racks, Machines, Carts, Benches, and other equipment that does not fall under any other color guidelines
RED	Defect/Scrap Area; Red Tag Area
ORANGE	Materials or Product Inspection -OR- Energized Equipment
GREEN	Raw Materials -OR- First Aid-Related Locations

BLUE	Works-In-Progress
BLACK	Finished Goods
BLACK YELLOW	Areas which present physical or health risks to employees. Indicates that extra caution is to be exercised.
RED WHITE	Areas to be kept clear for safety reasons (around emergency access points, electrical panels, firefighting equipment, etc.)
BLACK WHITE	Areas to be kept clear for operational purposes (non-safety related)

GRIPFOOT CONFORMABLE

**Improve grip on irregular surfaces
with this abrasive grit finish**

- Self-adhesive foiled backing tape with an abrasive surface to help improve anti-slip properties.
- A foiled backing allows for rolling and hammering into shape on irregular surfaces.
- Product height: 0.9 mm



SIZE	BLACK
152 mm x 610 mm	Pack of 10 GF010006C



COBAGRIP® SHEET

GRP flooring is the ideal solution to combat slip hazards such as liquids and ice

- An easy to install anti-slip solution for internal and external areas.
- Simply bond or screw the GRP flooring onto the existing floor surface.
- Available in a range of colours which meet the Equality Act requirements, including black, grey and yellow.
- Product Height 5 mm

SIZE

1.2 m x 1.2 m

BLACK

GRP010002

Typical Applications

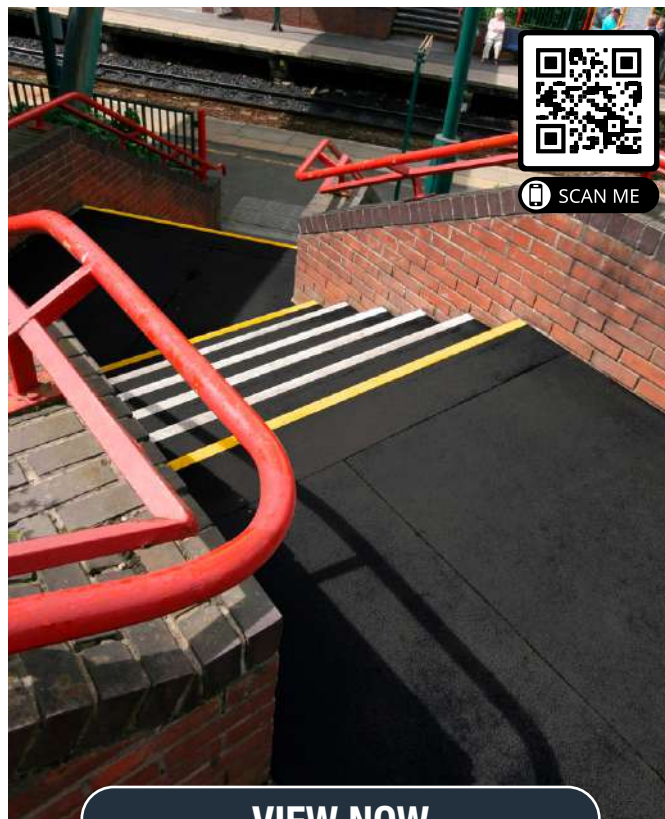
External walkways

Material

GRP

Resistance to Environment

Suitable for indoor and outdoor environments



[VIEW NOW](#)





MATS FOR LEISURE

Working out floor protection and slip prevention

COBA has been supplying the leisure industry with safety matting for many years, and we have a range of options that reflects our experience in this sector. Hygienic anti-slip matting for swimming pools and changing rooms, quality gymnasium matting, and Critical Fall Height tested rubber safety matting for playgrounds give just a flavour of what's on offer. We also supply a range of equestrian rubber matting for use in stables and equine wash down areas.



[VIEW NOW](#)



FLEXI-DECK

Flexible and lightweight vinyl decking for wet environments

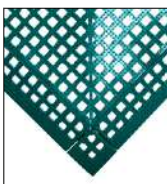
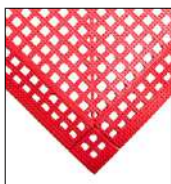
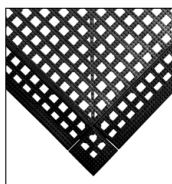
- Flexible vinyl floor tiles that reduce slipping on wet surfaces.
- Textured top surface provides grip and is comfortable to walk on barefoot.
- Holes provide efficient drainage of water.
- Underside studs enhance drainage, helping to further reduce the risk of slipping.
- Ideal for leisure areas, such as shower rooms and swimming pool walkways.
- Easy to roll up, clean and relocate.
- Product height: 13 mm

Material

PVC

Resistance to Environment

Suitable for wet and dry indoor environments



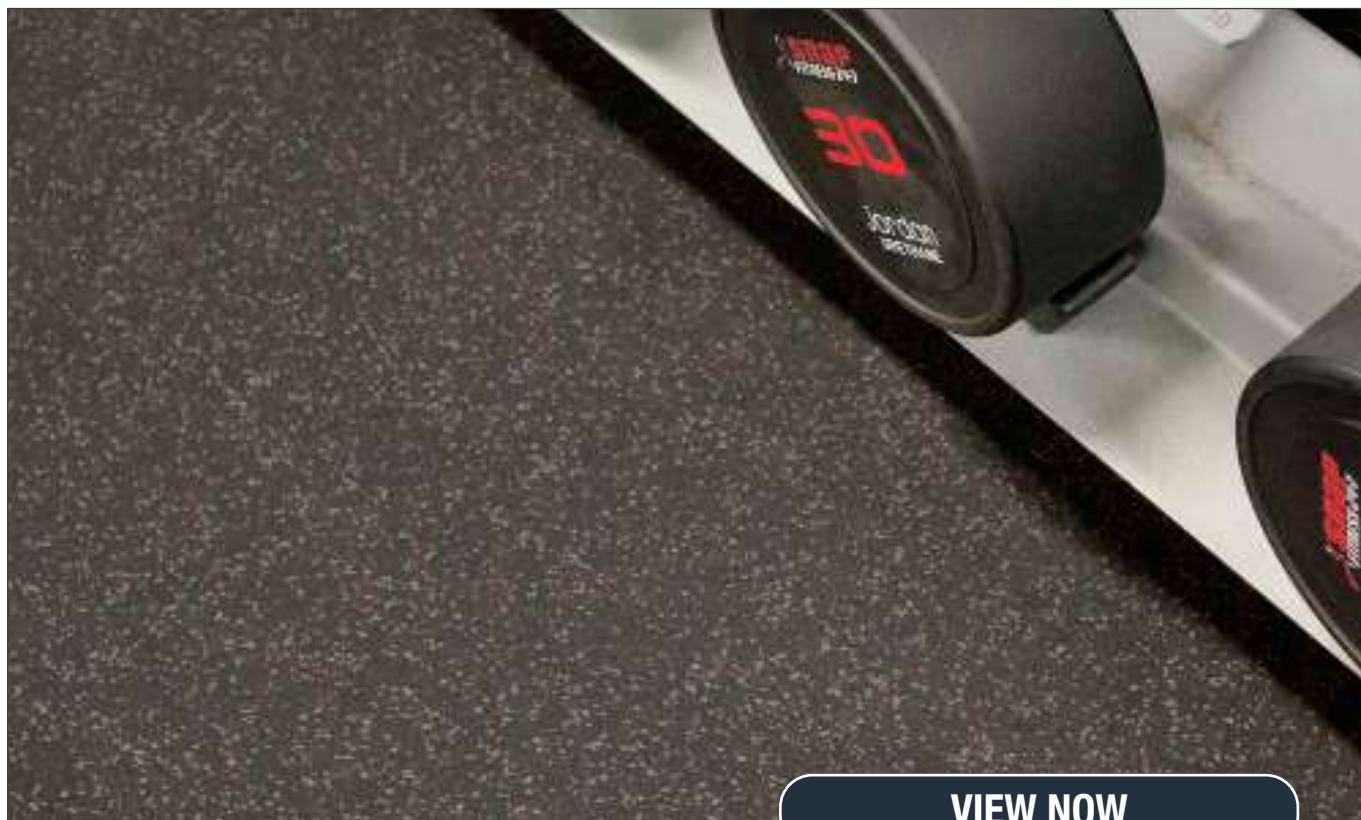
SIZE	PART DESCRIPTION	BLACK	RED	GREEN	GREY
30 cm x 30 cm	Tile (Pack of 9)	FD010001	FD030001	FD040001	FD060001
	Female Edge (Pack of 3)	FD010002F3	FD030002F3	FD040002F3	FD060002F3
	Male Edge (Pack of 3)	FD010002M3	FD030002M3	FD040002M3	FD060002M3
	Corner (Pack of 4)	FD010004	FD030004	FD040004	FD060004



RUBBER SHEETING

Providing rubber sheet materials for all purposes

A complete range of quality rubber sheet material for countless applications. Rubber sheet is used for a myriad of purposes including waterproof seals and gaskets, shotblasting, and food and beverage applications. With over 40 grades on offer, we should be able to provide what you need. Available to order in rolls and by the metre.



[VIEW NOW](#)

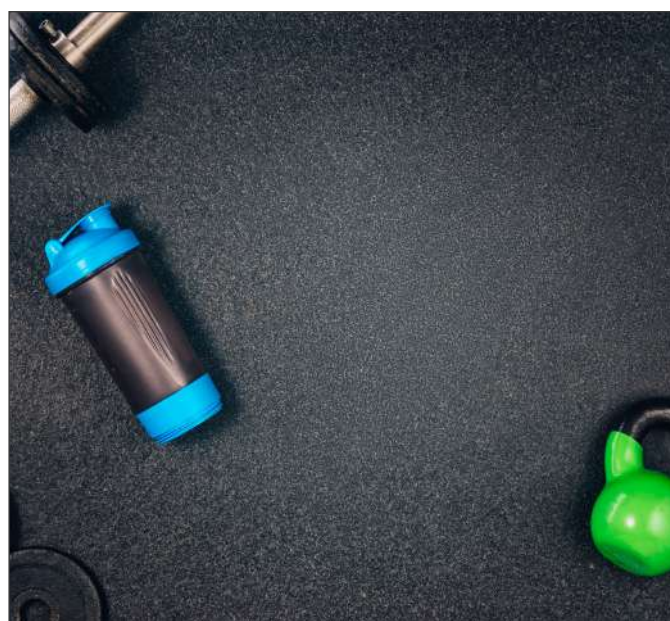
SPECKLED RUBBER MATTING

Provides excellent impact durability

- Made from EPDM rubber particles and SBR rubber particles, which are subjected to high temperature, pressure and cutting, and have a rich color selection and long life.
- Suitable for indoor use which requires elasticity, sound absorption, shock absorption, skid resistance, abrasion resistance and tensile properties.
- Provides excellent impact durability and skid resistance under wet or dry conditions.
- Eco-friendly material, no nose irritation.
- Perfect for a Gym application.
- Available in black/blue and black/grey.
- Product height: 3 mm, 5 mm, 10 mm



SIZES	BLACK/BLUE			BLACK/GREY		
	3mm	5mm	10mm	3mm	5mm	10mm
1.2 m x 10 m	RRM010002	RRM010004	RRM010006	RRM010001	RRM010003	RRM010005
1.2 m x per linear metre	RRM010002C	RRM010004C		RRM010003C		



RUBBER CRUMB

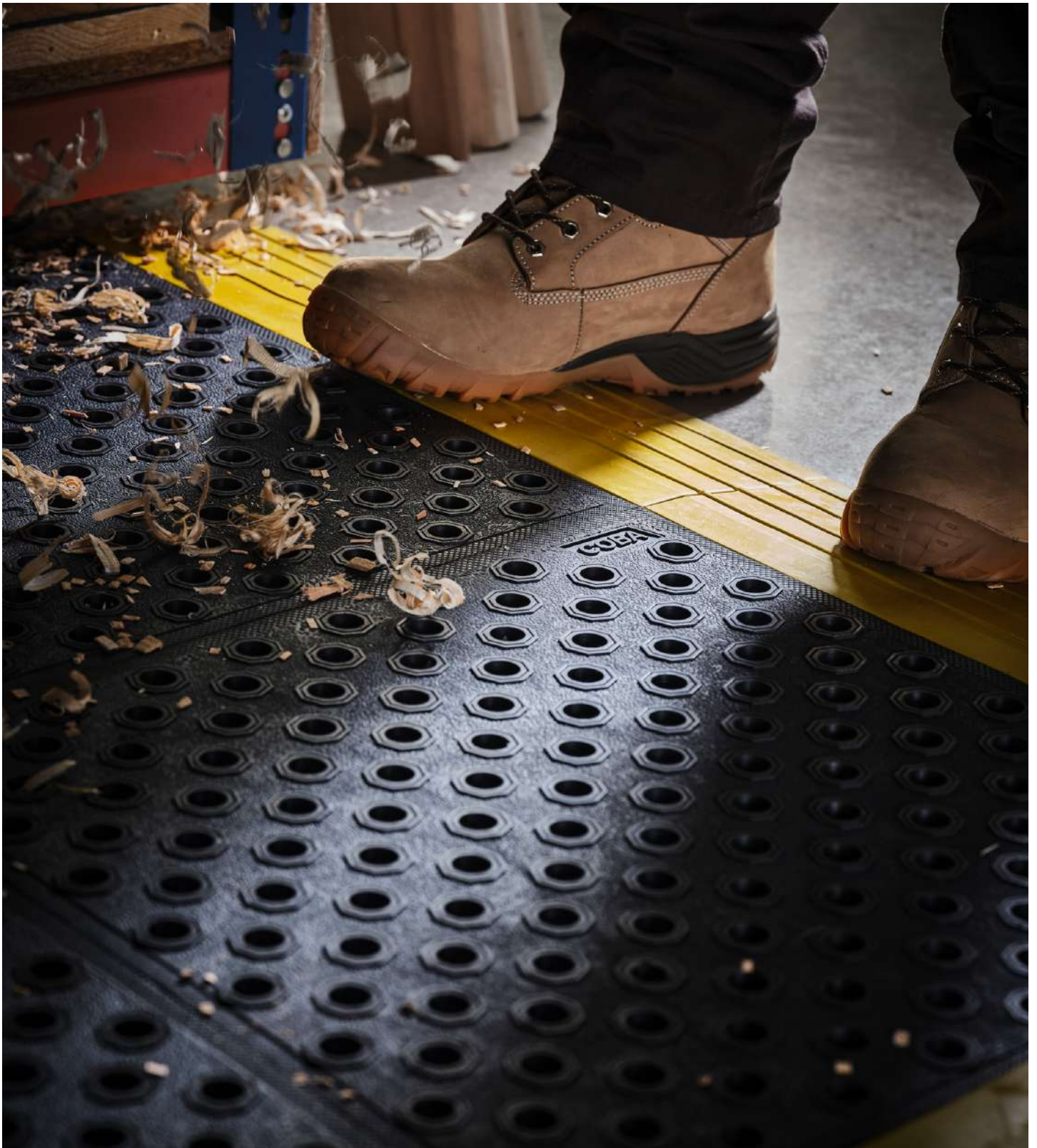
Used in a range of industrial application

- Protection layer for constructional and industrial applications, membrane protection.
- This is an elastic pre-manufactured mat made from selected rubber bound with polyurethane
- Strength tested to DIN EN ISO 1798
- Fire tested to DIN EN 13501-1

SIZES	HEIGHT	SKU
1250 mm x per linear metre	4mm	RC010001

[VIEW NOW](#)





WORKPLACE SAFETY MATTING

Improving comfort and safety, reducing the risk of accident and injury

For decades, COBA has been a market leader in workplace safety matting, and today we offer one of the most comprehensive ranges for any working environment, whether that's industrial, catering or retail. Whether the main objective is to reduce the risk of slips or to provide fatigue relief from standing, we have a solution to suit a wide variety of budgets and environments.



[VIEW NOW](#)

DIAMOND TREAD

Fatigue relief for welding professionals

- Welders need relief from standing like any other professional.
- The heavy-duty top surface is both resilient and fire tested, whilst the soft foam underlayer provides cushioning for the feet.
- Ideal for welding bays and demanding industrial use.
- Flame retardant top surface (tested to BS EN 13501-1) – so weld sparks aren't an issue.
- Loose lay – can be moved easily.
- Bevelled edges help avoid creating a trip risk.
- Product height: 15 mm

SIZE

0.6 m x 0.9 m

BLACK

DTB010001



Typical Applications

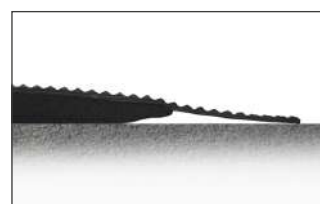
Welding bays

Material

Vinyl top surface with PVC foam backing (fusion bonded, not glued)

Resistance to Environment

Suitable for dry indoor environments. Will withstand welding splatter and spillages of other hot materials.



BUBBLEMAT

Smart anti-fatigue mat with a distinctive bubbled surface

- Raised bubble patterned surface stimulates feet and legs to aid circulation.
- Underfoot cushioning also makes prolonged occupational standing more comfortable.
- A choice of materials depending on the demands of the environment (dry use only).
- Complete mats suitable for workstations and interlocking sections available for longer production lines.
- Product height: 14 mm

SIZE	PART DESCRIPTION	BLACK
0.6 m x 0.9 m	(edged all round)	BF010001



VIEW NOW

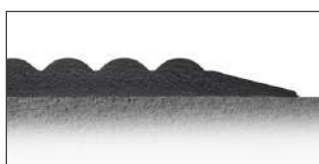
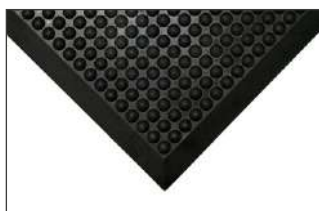


COBAELITE® BUBBLE

Excellent fatigue relief with superior resilience

- Improve comfort when standing in the workplace.
- Raised surface stimulates blood circulation and foot movement.
- Superior material ensures durability.
- Ramped edges help avoid creating a trip risk.
- Loose lay – can easily be installed in a wide array of workplaces.
- Fire tested to BS EN 13501-1.
- Product height: 15 mm

SIZE	BLACK
0.6 m x 0.9 m	SE010001



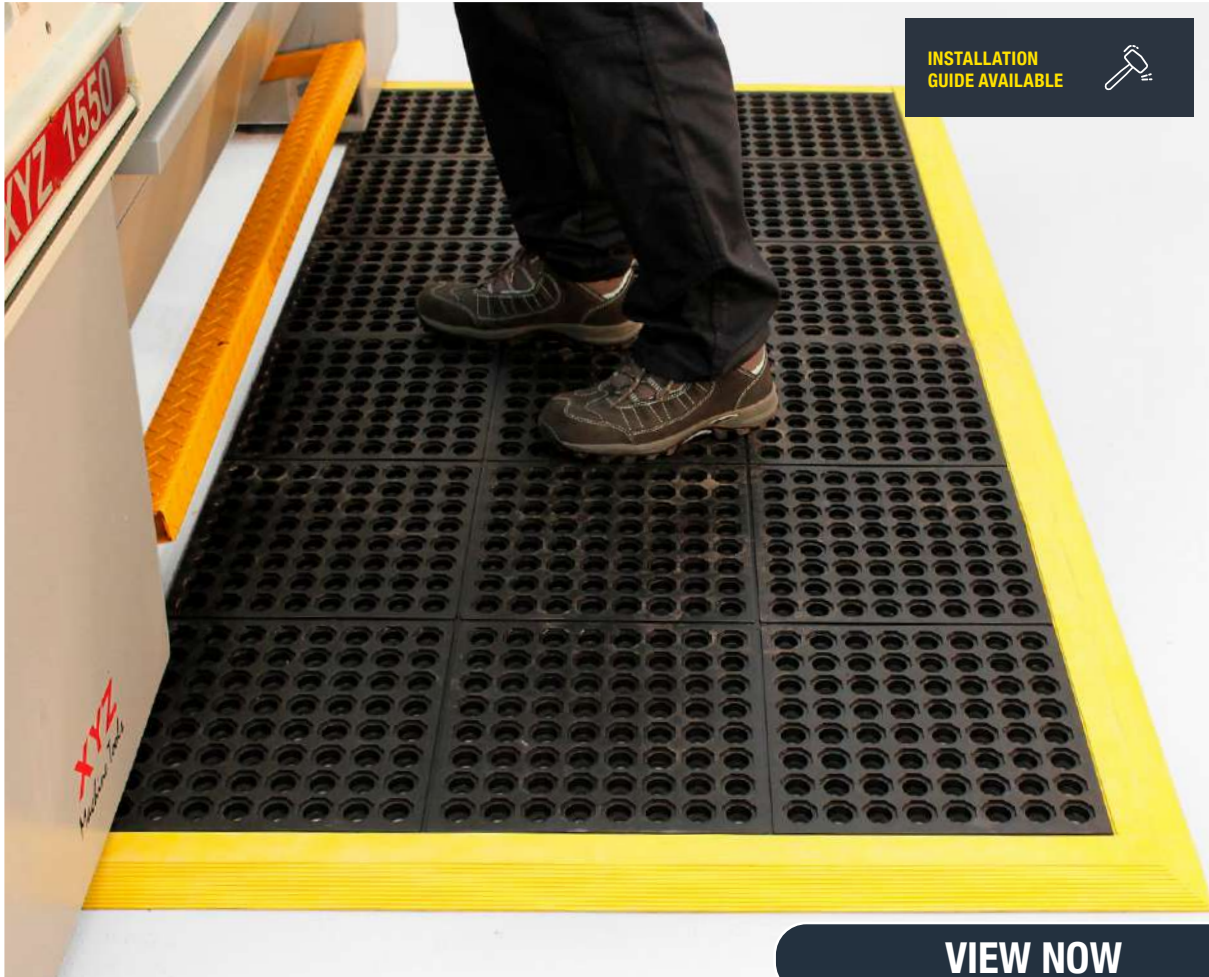
Typical Applications
General industrial, Retail

Material
PU

Resistance to Chemicals
PU offers limited resistance to chemicals and oils



Visit www.cobafrica.com for information, advice and support.



INSTALLATION
GUIDE AVAILABLE



SCAN ME

VIEW NOW

FATIGUE-STEP

Fatigue relief for large, wet and oily shop floors

- Tiles link together to provide an anti-fatigue surface for particularly wet or oily areas.
- Soft, yet resilient rubber floor tiles.
- Open holes allow efficient drainage of spilt liquids.
- Effective anti-fatigue properties for prolonged standing.
- Main tiles available in two options: Standard or Nitrile
- Nitrile option has excellent resistance to oils, chemicals and grease.
- Slip tested to DIN 51130.
- Optional ramped edging in yellow or black.
- Product height: 14 mm, 19 mm

SIZE	BLACK 18 MM	BLACK 14MM
0.9 m x 0.9 m	SS010001	SS010006

EDGING	PART DESCRIPTION	BLACK
Fatigue-Step Edges	Female Corner Edge	SS010002F
Fatigue-Step Edges	Male Corner Edge	SS010002M



Typical Applications

All industrial environments,
Bars, Catering environments,
Areas where swarf is prevalent.
Children's play areas.

Material

Rubber mix, including >50% recycled material

Resistance to Chemicals

Natural rubber offers limited resistance to chemicals and oils



EDGING OPTIONS AVAILABLE
ON THE 19MM FATIGUE-STEP

COMFORT-LOK

Fatigue relief for standing workers on production lines or benches

- Heavy-duty rubber mats provide a comfortable standing surface for operatives.
- Available as interlocking modules for long runs, or as a single workstation mat.
- Resistant to oil and grease making it ideal for food production areas or in any catering business.
- Diamond patterned surface provides underfoot grip.
- Hardwearing rubber ensures a long life in normal use.
- Suitable for high temperature environments.
- Slip tested to DIN 51130.
- Product height: 12 mm

SIZE	PART DESCRIPTION	BLACK
0.7 m x 0.8 m	(interlocking end piece)	CL010001
0.7 m x 0.8 m	(interlocking middle piece)	CL010002
	Edged rounded	CL010004



Typical Applications

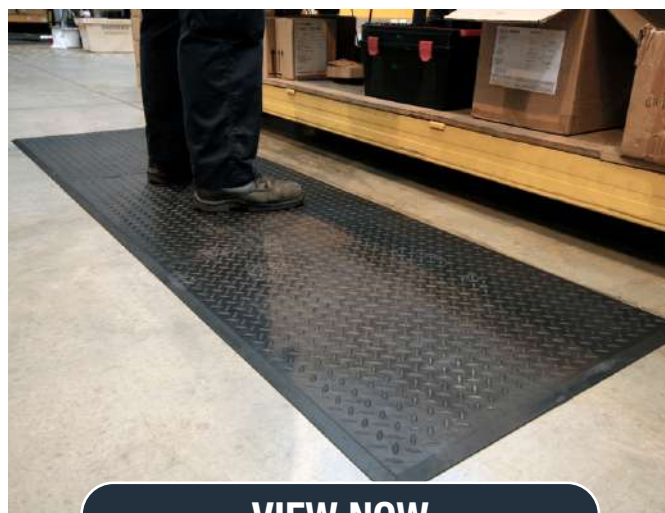
General industrial

Material

Natural rubber/25% NBR blend

Resistance to Environment

Suitable for wet and dry indoor environments



VIEW NOW



RAMPMAT

Banish cold hard concrete floors with our entry level rubber anti-fatigue mat

- Provide standing relief to all workers with this economical anti-fatigue mat.
- Raised circular surface provides effective slip resistance.
- Open drainage holes capture spilt liquids, swarf or other debris to help prevent slips.
- Moulded ramped edges to reduce the risk of trips and allow wheeled access.
- Made from hardwearing rubber for durability.
- Slip tested to DIN 51130.
- Product height: 14 mm

SIZE	BLACK
0.8 m x 1.2 m	RMR010001

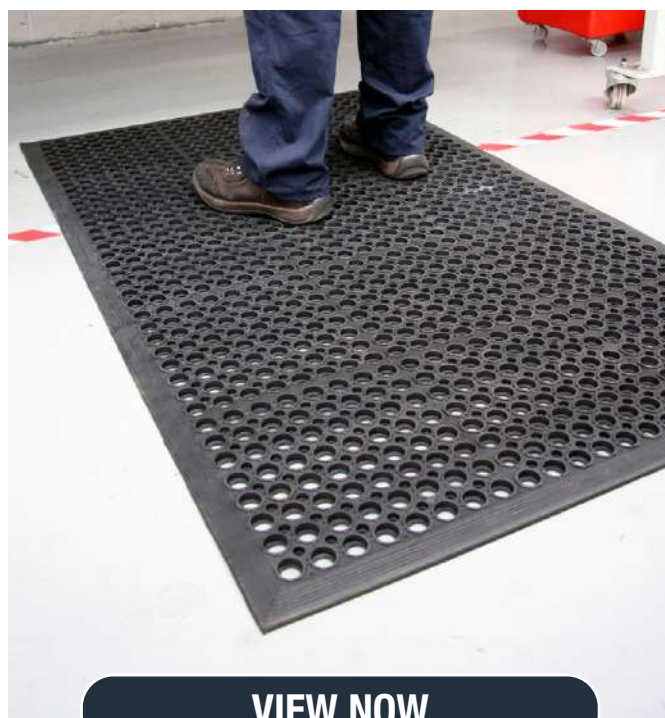
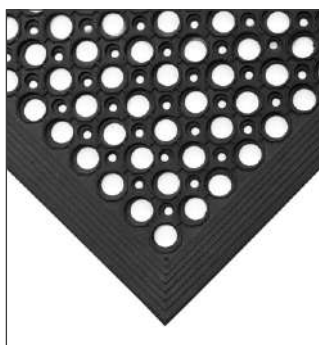


Typical Applications

General industrial, Areas where swarf is prevalent. Entrance areas.

Material

Rubber mix, including >50% recycled material



VIEW NOW



Visit www.cobafrica.com for information, advice and support.



[VIEW NOW](#)

HYGIMAT

A revolutionary hygienic anti-fatigue mat

- Improve feeling of comfort and energy whilst standing at work.
- Ideal for any workplace where hygiene is important e.g. healthcare, food manufacturing, catering, hospitality, clean rooms or food retail.
- Made from a revolutionary 'gel foam' material that combines the best in durability and comfort.
- Material also has anti-microbial properties
- Closed cell construction means that no liquids can penetrate the mat and reduce performance.
- Version with holes is ideal for wet workplaces in need of drainage.
- Oil resistant.
- Easily cleaned – can be cleaned with detergent or can be steam sterilised.
- Fire tested to BS EN 13501-1 and slip tested to DIN 51130.
- Product height: 17 mm \pm 1 mm

SIZE	(WITH HOLES)	(SOLID SURFACE)
0.9 m x 1.5 m	HYG010002	HYS010002
0.9 m x 1.8 m	HYG010003	HYS010003



Typical Applications

Hospitals, Clean rooms, Offices, Catering environments

Material

Rubberised Gel Foam

Resistance to Chemicals

Generally resistant to chemicals.

Version with holes is ideal for wet workplaces in need of drainage.





Typical Applications
General industrial, Bars,
Catering environments

Material
Natural rubber

Resistance to Environment
Suitable for indoor and
outdoor environments

COBADELUXE

Fatigue relief for heavy-duty workstations

- Creates a safe and very comfortable standing surface.
- Its thickness makes it a durable mat that can withstand impact.
- Quickly cover large areas if used as a connecting system.
- Made from hardwearing rubber providing longevity.
- Excellent slip resistance in wet areas.
- Open drainage holes for spilt liquids make it ideal for wet workplaces.
- Available as a single mat or can be linked together with connectors for larger areas.
- Use of optional edges is recommended to reduce the risk of trips.
- Slip tested to DIN 51130.
- Product height: 18.5 mm

SIZE

1 m x 1.5 m

Connector

Edging Yellow

1.565 m x 50 mm

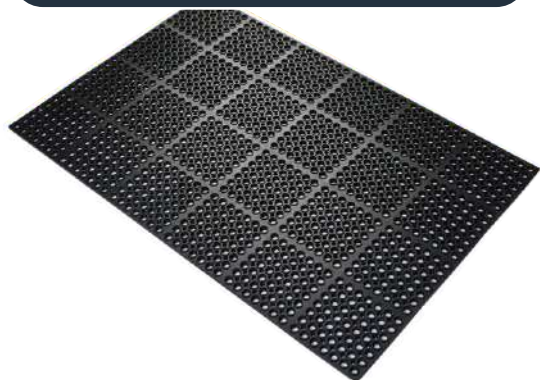
BLACK

DM010002

DM010003

P240-L1093-C09-YE

VIEW NOW



Visit www.cobafrica.com for information, advice and support.



COBAMAT® STANDARD

Standing the test of time, our original safety matting

- The original premium multi-purpose safety mat widely used across industry today.
- An ideal choice for longer production lines, or for covering mezzanine floors.
- Available in four vibrant colours and four weave (hole) sizes to suit the application.
- Vinyl strips are interwoven, rather than welded, for better flexibility and lower risk of breaking.
- Cross-ribbed grip to reduce slipping.
- Fully reversible for added longevity.
- Suitable for use in wet and dry environments, or where swarf and debris cause problems.
- Fire tested to BS EN 13501-1 and slip tested to DIN 51130.
- The largest hole size available in COBAMat, this matting is ideally suited to trapping swarf and larger debris particles.
- Commonly used in areas such as machine shops with lathes, assembly/finishing areas where offcuts and debris may be present.
- 22 mm x 22 mm hole size.
- Product height: 12 mm

SIZE

0.6 m x 10 m
0.9 m x 10 m

BLUE

CS020610
CS020910



Typical Applications

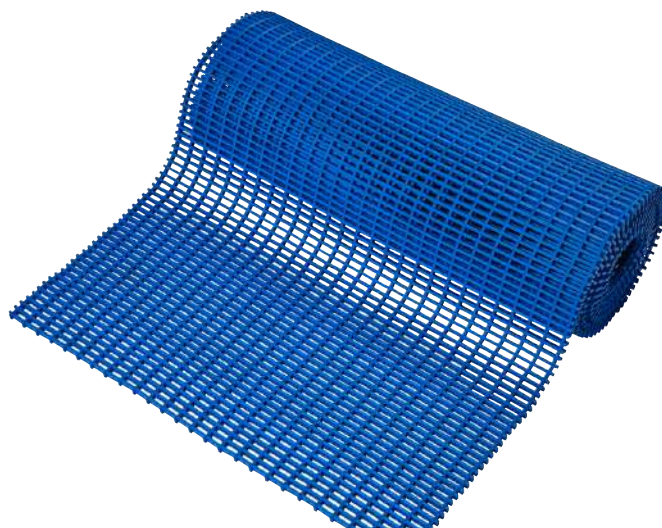
General industrial, Engineering,
Machine tool areas

Material

PVC

Resistance to Chemicals

PVC is resistant to many different chemicals, alkalis and general industrial chemicals. PVC resists alcohols, aliphatic hydrocarbons, oils, weak acids, strong mineral acids and alkalis. PVC resists oil and grease if properly cleaned. PVC does not resist organic solvents, ketones, esters and aromatic hydrocarbons. Please contact us for more specific details



VIEW NOW



SITEPATH

Create high visibility walkways with ease

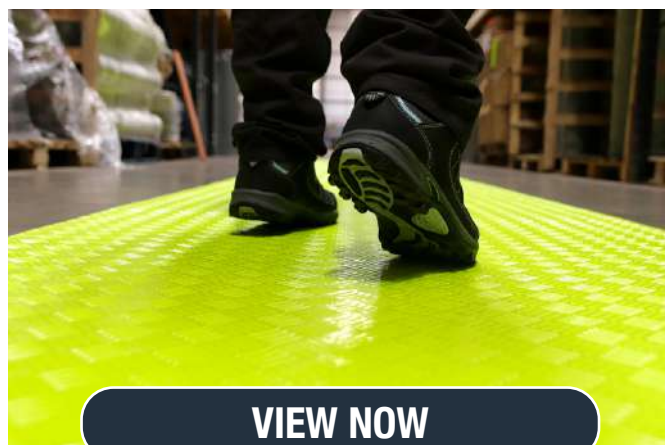
- A lightweight matting for easy deployment on construction or factory sites.
- Flexible material can be laid onto uneven surfaces.
- Diamond pattern top surface.
- Yellow colour ensures walkways are easily visible.
- Easily cleaned with a jet washer or hose.
- Supplied in long rolls for easy installation.
- Can be laid loose or adhered to the floor.
- Low profile reduces trip potential.
- Product height: 2 mm

SIZE

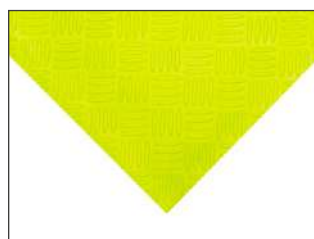
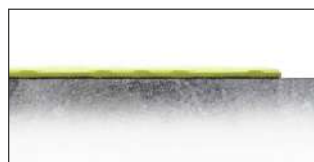
1 m x 10 m

YELLOW

SP070001



VIEW NOW



Typical Applications
Walkways

Material
PVC

Resistance to Environment
Generally resistant to chemicals.



Visit www.cobafrica.com for information, advice and support.



DIAMOND GRID ANTI BACTERIAL

Flexible matting for catering, hospitality and food processing industries

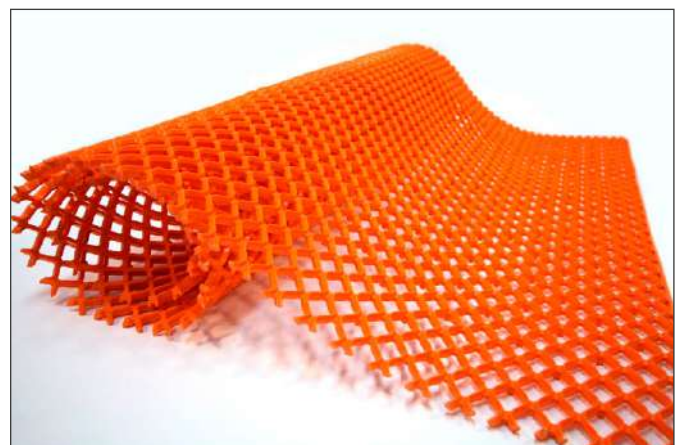
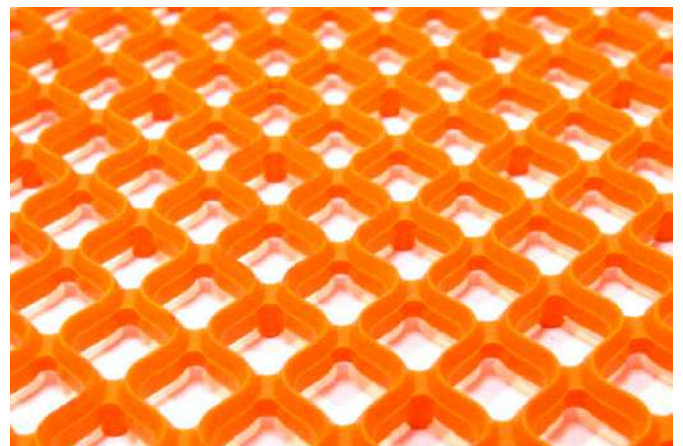
- Hygienic anti-microbial properties.
- Oil resistant.
- Anti-slip top surface for a safe footing in wet conditions.
- Specially designed underside studs have exceptional water drainage properties.
- Easily cleaned, rolled up and moved.

SIZE

1 m x 2.4 m

ORANGE

DG170001





LEISURE MAT

Safety matting for pools and leisure

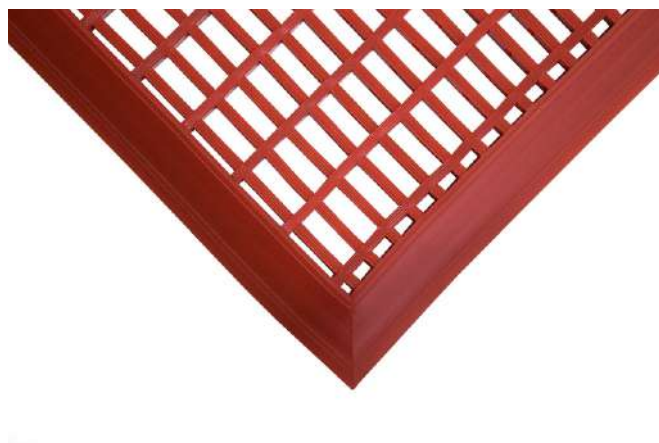
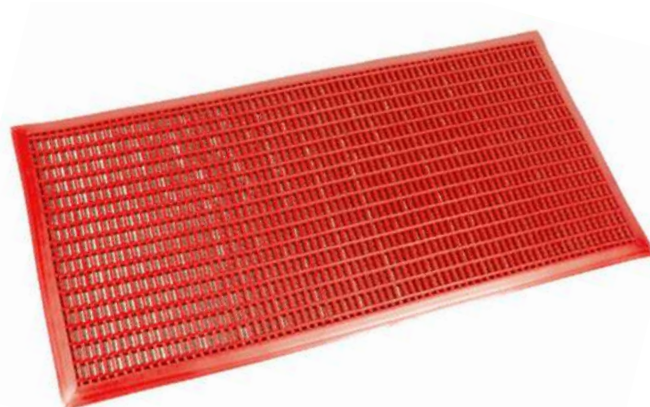
- Premium quality vinyl leisure matting. • Ideal for use around swimming pools, in changing rooms, gyms, shower rooms, etc.
- Reduces the risk of slipping in wet areas. • Open surface allows optimal drainage. • Interwoven design for more flexibility and durability. • Safety bevelled edging as standard to reduce risk of tripping. • Fully slip tested – see datasheet for details. • Bespoke sizes available on request.

SIZE

0.6 m x 1.2 m

RED

LM030612



Visit www.cobafrica.com for information, advice and support.



RETAIL RANGE

We understand your needs

Identifying and understanding your loyal shopper groups and their demographics, by retail store cluster, is essential. Let us assist you to create product assortment strategies according to categories you carry. We can also assist with product placement including overall store layouts, category adjacencies and shelving strategies. View our retail range for the perfect product solution for your store.



VALUE DESIGN COIR MAT

Rustic fun with coir

- A variety of fun designs.
- An extremely hardwearing doormat.
- Effectively scrapes dirt and mud off shoes.
- Slip-resistant rubber backing.
- Samples are available on request for pre-qualified leads and resellers only.

SIZE

0.6 m x 0.4 m

ASSORTED

DE080002

[VIEW NOW](#)



'CAST IRON' STEEL MAT

Stylish 'cast iron' effect doormat

- Solid rubber construction emulating a stylish cast iron design.
- Large holes around the edges allow debris to fall through the mat.
- Easy to clean.
- Three unique patterns.
- Samples are available on request for pre-qualified leads and resellers only.
- Filament structure creates a capillary effect for improved dirt retention/absorbency.
- Luxuriously soft pile that looks smart and will not lint.
- Environmentally-friendly – does not require chemical pre-treatment or washing detergents.
- Samples are available on request for pre-qualified leads and resellers only.
- Strength designation: 4.6%.



SIZE	PART DESCRIPTION	BLACK
0.7 m x 4.5 m	Zebra Design	CMS010003
0.7 m x 4.5 m	Leaves Design	CMS010001
0.7 m x 4.5 m	Welcome Design	CMS010002

VIEW NOW



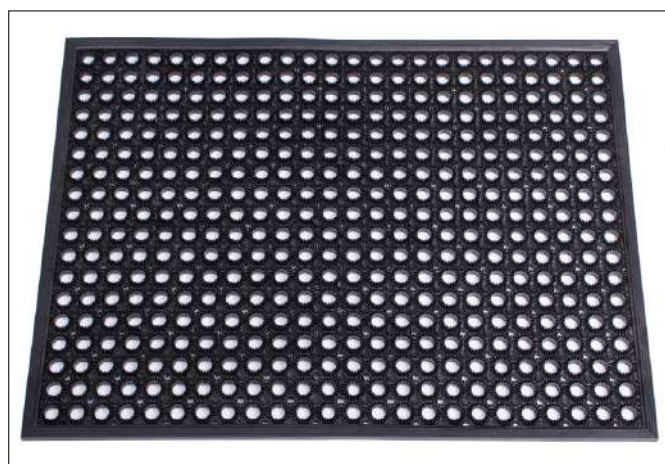
Visit www.cobaafrika.com for information, advice and support.

SCRAPER MAT

Reversible open surface doormat

- Raised circular pattern surface provides grip while scraping dirt and moisture.
- Large holes allow debris to fall through the mat.
- Tough and durable, can be used outdoors.
- Fully reversible.
- Samples are available on request for pre-qualified leads and resellers only.
- Filament structure creates a capillary effect for improved dirt retention/absorbency.
- Luxuriously soft pile that looks smart and will not lint.
- Environmentally-friendly – does not require chemical pre-treatment or washing detergents.
- Samples are available on request for pre-qualified leads and resellers only.
- Strength designation: 4.6%.

SIZE	PART DESCRIPTION	BROWN
0.62 m x 0.47 m	Doormat	SCM050001



RUBBER PIN MAT

Flexible natural rubber modules deliver excellent dirt-scraping and trapping actions

- Slip-resistant base to help retain position.
- Can be easily cleaned – simply shake off dirt.
- Budget doormat offering all-round performance.
- Samples are available on request for pre-qualified leads and resellers only.
- Safety bevelled edges all round.
- Filament structure creates a capillary effect for improved dirt retention/absorbency.
- Luxuriously soft pile that looks smart and will not lint.
- Environmentally-friendly – does not require chemical pre-treatment or washing detergents.
- Samples are available on request for pre-qualified leads and resellers only.
- Strength designation: 4.6%.

SIZE	BLACK
0.33 x 0.53 m	RPM010001

RECYCLED MATERIALS

Typical Applications

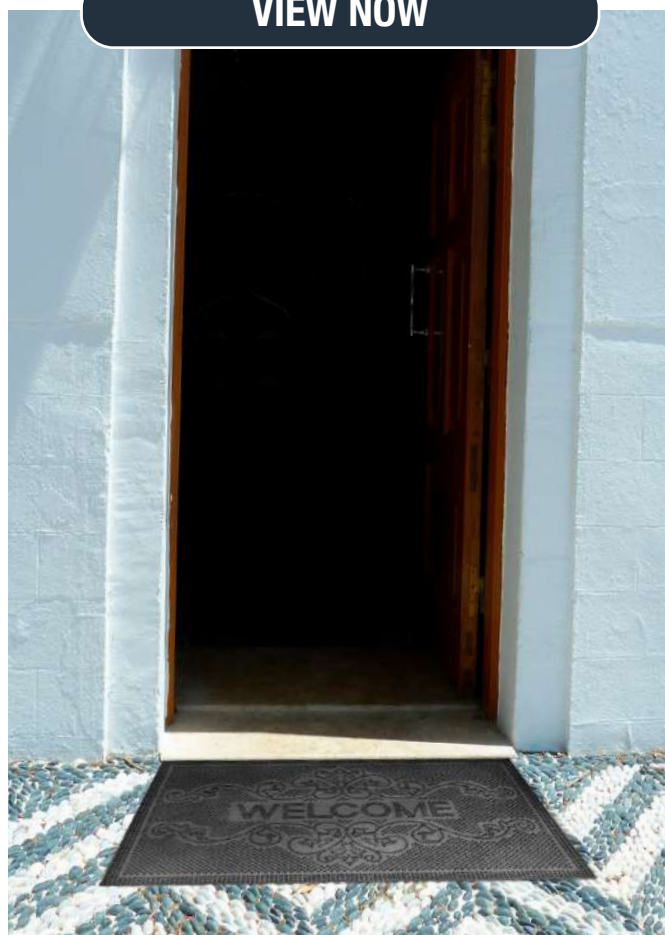
General industrial, Areas where swarf is prevalent. Entrance areas.

Material

Rubber mix, including >50% recycled material



VIEW NOW





SHOP NOW

EVERFLOW HOSE GREEN/CLEAR

Maintain your garden with this top-quality hose

- Evercore® 'Flow Protect' Technology. • Water flow is not inhibited even when kinked, knotted or crushed. • UV resistant hose. • This hose is made in the UK. • Superior flexibility – ease of handling. • Service temperature -20oC to +60oC.
- Plant Friendly – Silicone-free. • REACH Compliant. • 30 years guarantee. • Manufactured in accordance with BS 3746 standards. • RHS Everflow is fully compatible with all UK standard 1/2" hosepipe fittings.

SIZE		SKU
25 m	Hose with Spray Gun	CP084-191-508-GGCS-10
25 m	Green/Clear Hose	CP084-191-508-GGCS-04



Visit www.cobaafrika.com for information, advice and support.



**moving
edge**

NOW AVAILABLE TO BUY ONLINE AT [MOVINGEDGE.COM](https://www.movingedge.com)



**cutting edge
safety**



Visit www.movingedge.com/za for information, advice and support.

ANTI-STAB AUTOSAFE BLADE

AutoSafe replacement Blade - Round Tip

SIZE

Anti-stab Blade

Pack of 50

BLADE

650010X50RB



CERAMIC ANTI-STAB BLADE

AutoSafe & AutoSlide replacement Blade

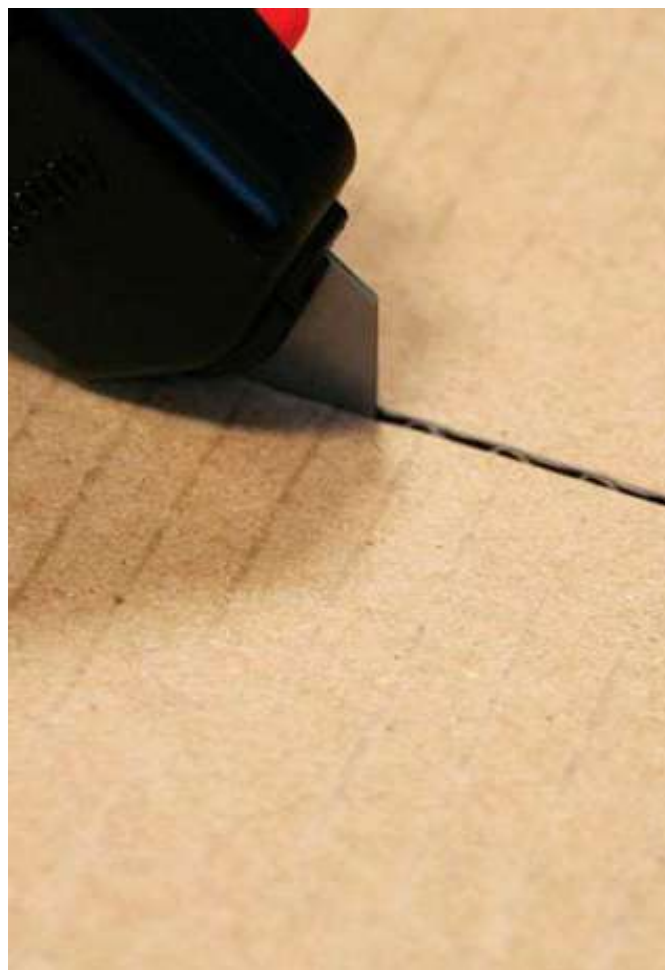
SIZE

Ceramic Anti-stab Blade

Pack of 10

BLADE

660010X10C

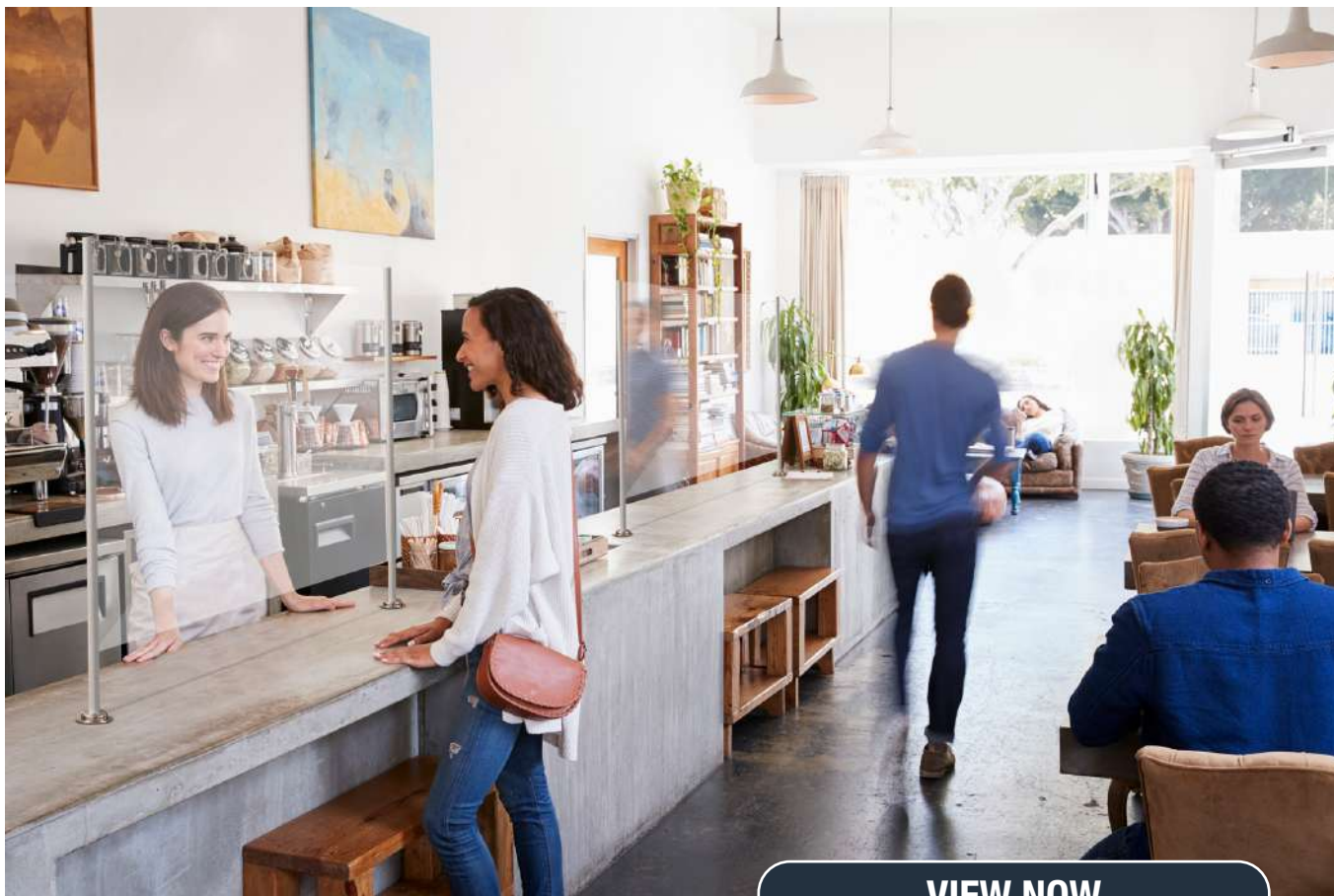




END OF RANGE

Selling the last of the best

Although these products were some of our best sellers, it is time to let them go. Even though life is back to normal, there are still some industries that can benefit from Safescrreens and Social Distancing Mats. Did you know that there are still over 14 Million people across the world infected with COVID-19? These products will assist in keeping people safe by adhering to safe social distance, especially in health care facilities.



[VIEW NOW](#)

SAFESCREEN PRO

Protect employees and customers from airborne contamination

- Simple to assemble and quick to install, no measuring required.
- Provides an effective yet simple barrier against germs spread by talking, coughing or sneezing.
- An economical covid-19 solution manufactured in the UK.
- Strong magnetic fixings combined with self-adhesive pads provide stability and reliability.
- Clear plastic allows employees to communicate and minimises disruption
- Flexible – shields can be positioned to suit desks of different shapes and sizes.
- Ideal for use in offices, receptions, restaurants, schools and more.
- Screens are 100% recyclable.

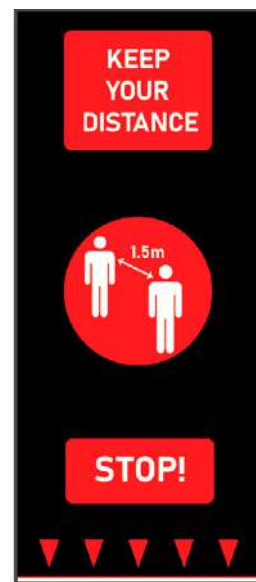
SIZE	DESCRIPTION	SKU
0.65 m x 0.85 m	Front - Small	SSP000002
0.85 m x 1.8 m	Front - Medium	SSP000006
0.85 m x 2.6 m	Front - Large	SSP000007



SOCIAL DISTANCING FLOOR MATS

Floor mats to promote social distancing, health and hygiene awareness.

- Communicate hygiene and social distancing rules to your staff or customers to limit the spread of Coronavirus.
- Ideal for all public buildings including retail, hospitality, healthcare, supermarkets, and offices.
- A cost effective and durable way to demonstrate that your business is 'COVID-19 Secure.'
- No more expensive than floor stickers but can be relocated and washed with ease.
- Printed digitally for superb colour reproduction and definition.
- Low profile borders to reduce the risk of trips.
- Machine washable at 30°C.
- Product Height: 6 mm.



VIEW NOW



SIZE	PART DESCRIPTION	SKU
0.65 m x 1.5 m	People - Red	SDM000006
1.0 m x 1.5 m	Feet - Blue	SDM000009
1.0 m x 1.5 m	People - Red	SDM000008
0.65 m x 1.5 m	Feet - Blue	SDM000007
0.65 m x 1.5 m	People - Blue	SDM000011
0.65 m x 1.5 m	People - Red	SDM000014M
0.65 m x 1.5 m	Feet - Blue	SDM000017M
0.65 m x 1.5 m	People - Blue	SDM000015M
0.65 m x 1.5 m	Feet - Red	SDM000016M
0.6 m x 0.4 m	Wash Hands	SDM020007
1.0 m x 1.5 m	Unedged	SDM-UNEDGED03



Visit www.cobafrica.com for information, advice and support.